



## Land East of Rayleigh Road

Appendices to Proof on Green Belt, Landscape and  
Visual Matters

APP/M1520/W/24/3338797

May 2024



# Contents

1.0	Plans	4
-----	-------	---

Project number: D3373  
Version: 01  
Version date: 07/05/24  
Comment: For Issue

Certain plans presented in this report are Reproduced from Ordnance Survey material by permission of Ordnance Survey on behalf of the Controller of Her Majesty's Stationery Office © Crown Copyright 2024. All rights reserved. Reference number OS AC0000813445.

1.0

# Plans

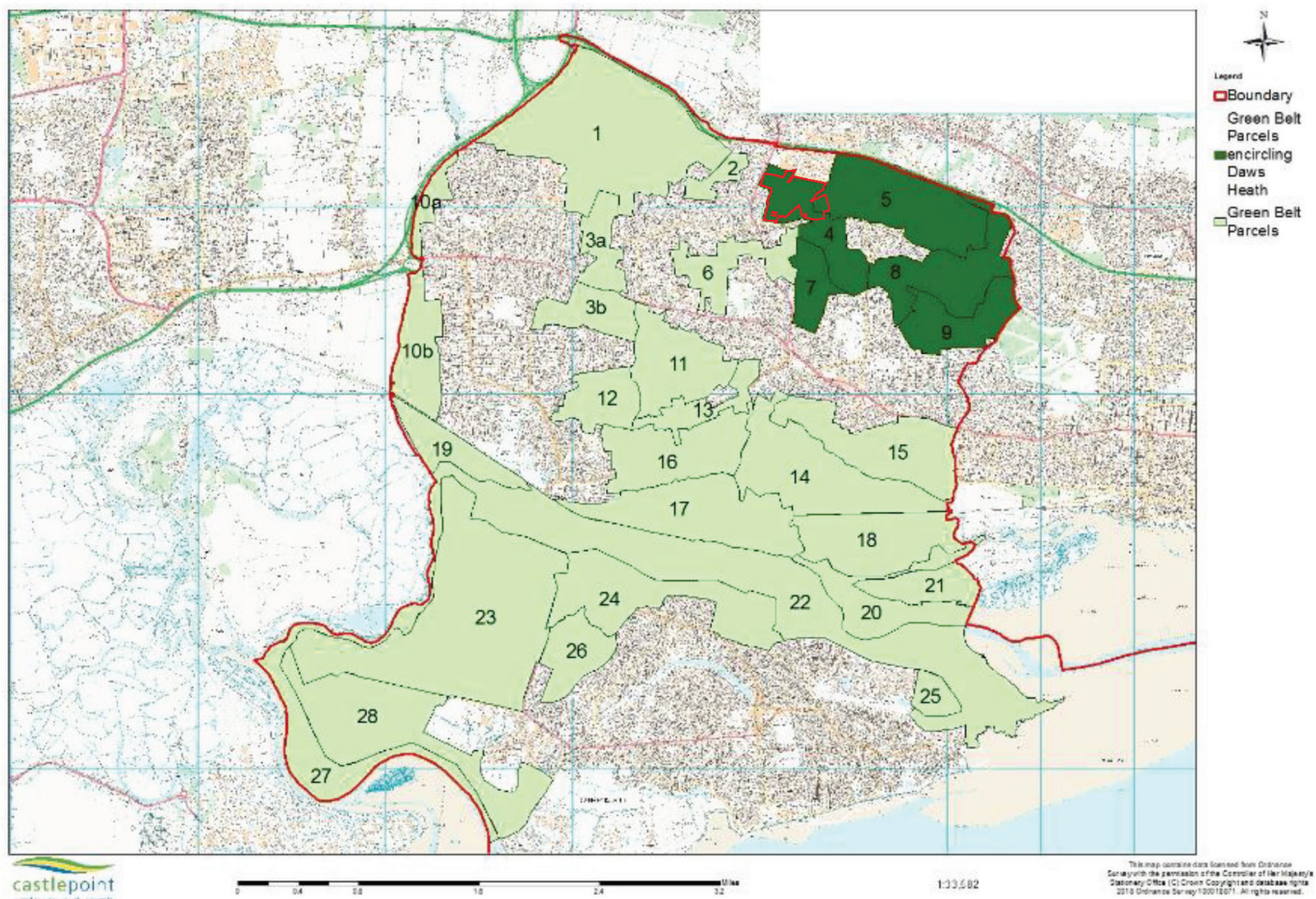


Fig 1.1 Plan showing Daws Heath Ring (Castle Point Borough Green Belt Review Part 1)

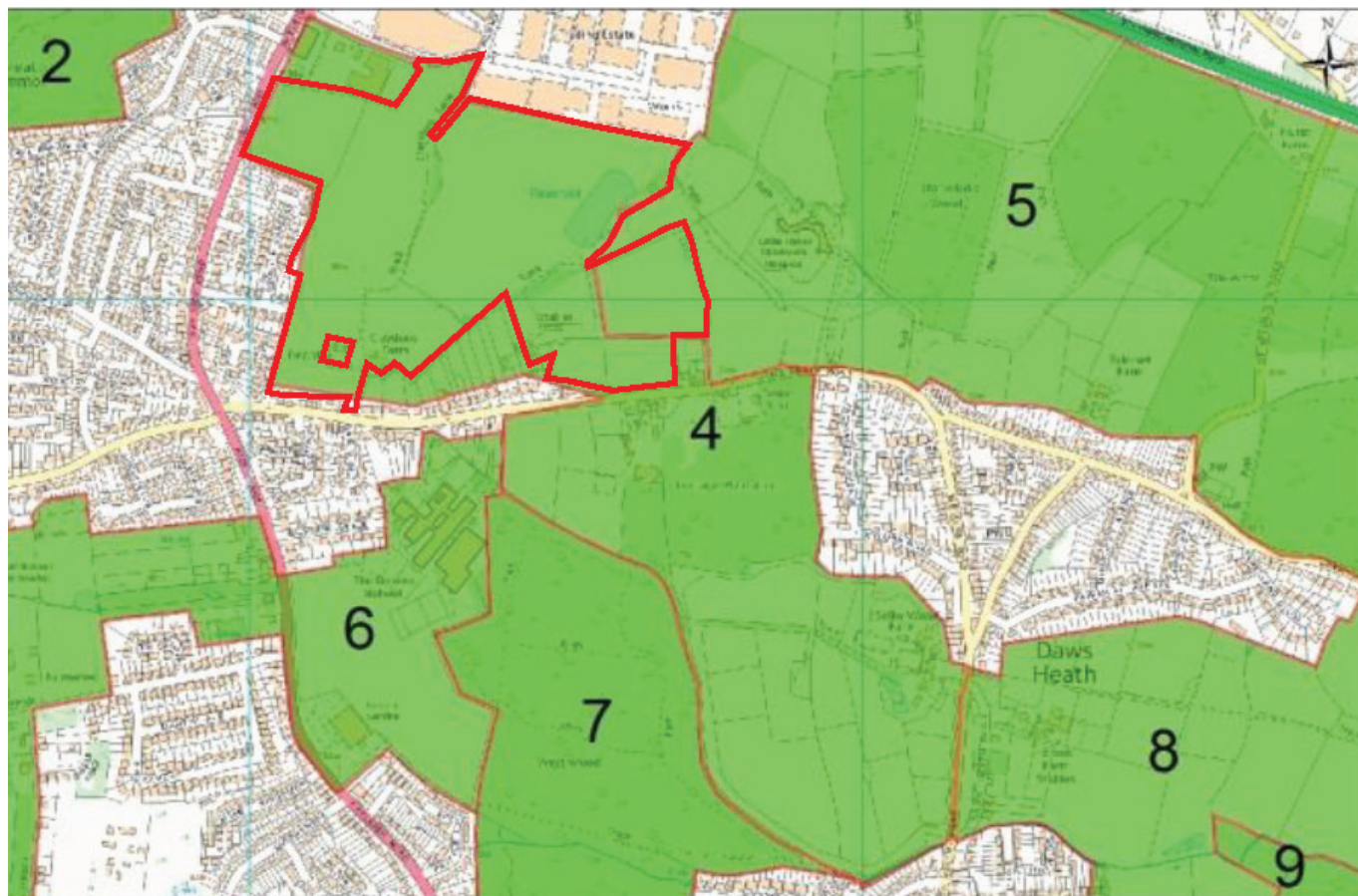


Fig 1.2 Plan Showing the Green Belt Parcels 4 & 5 (Castle Point Borough Green Belt Review Part 1)



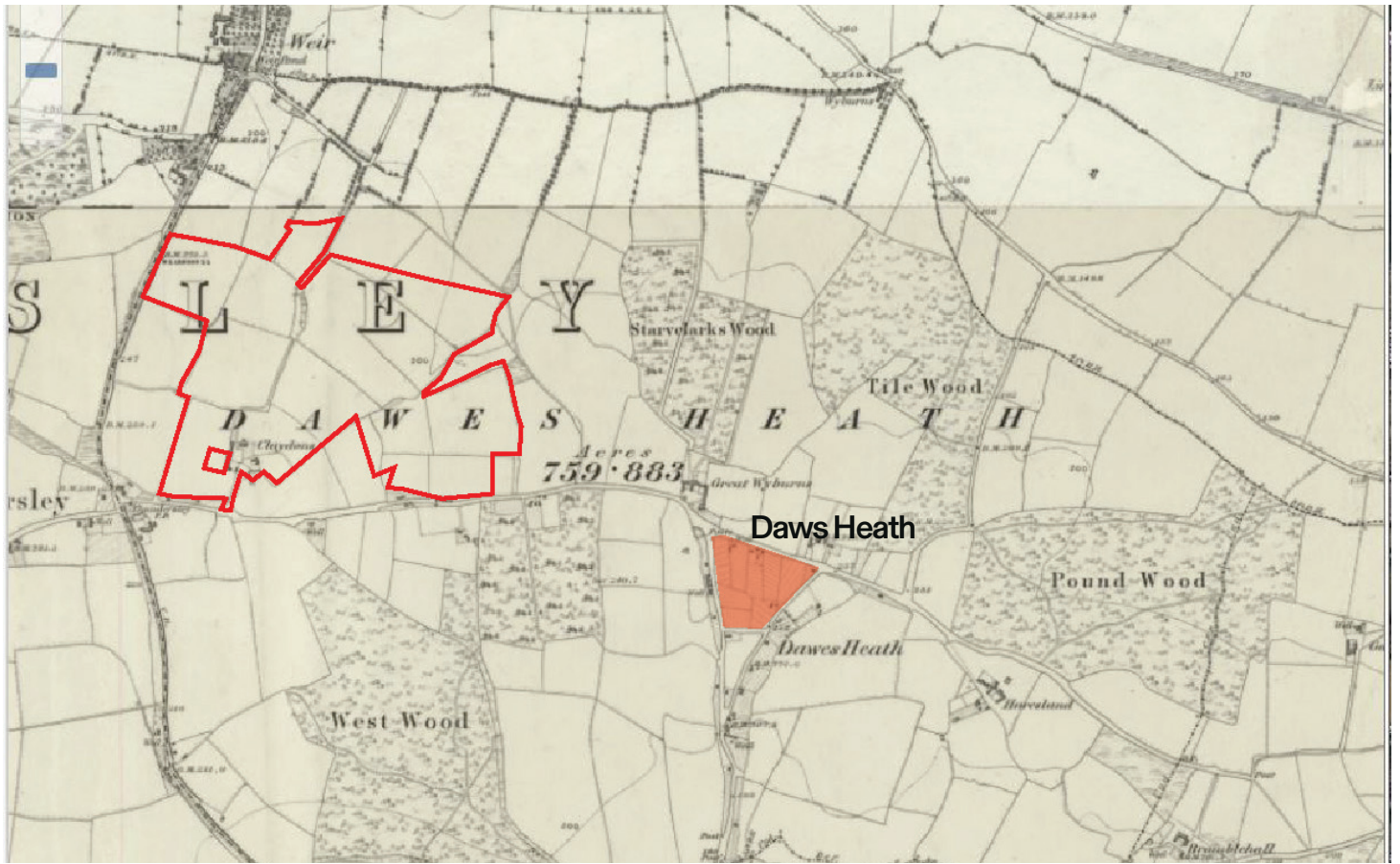


Fig.1.3 Plan showing Historic Map 1840s-1880s (National Library of Scotland - Map Images)

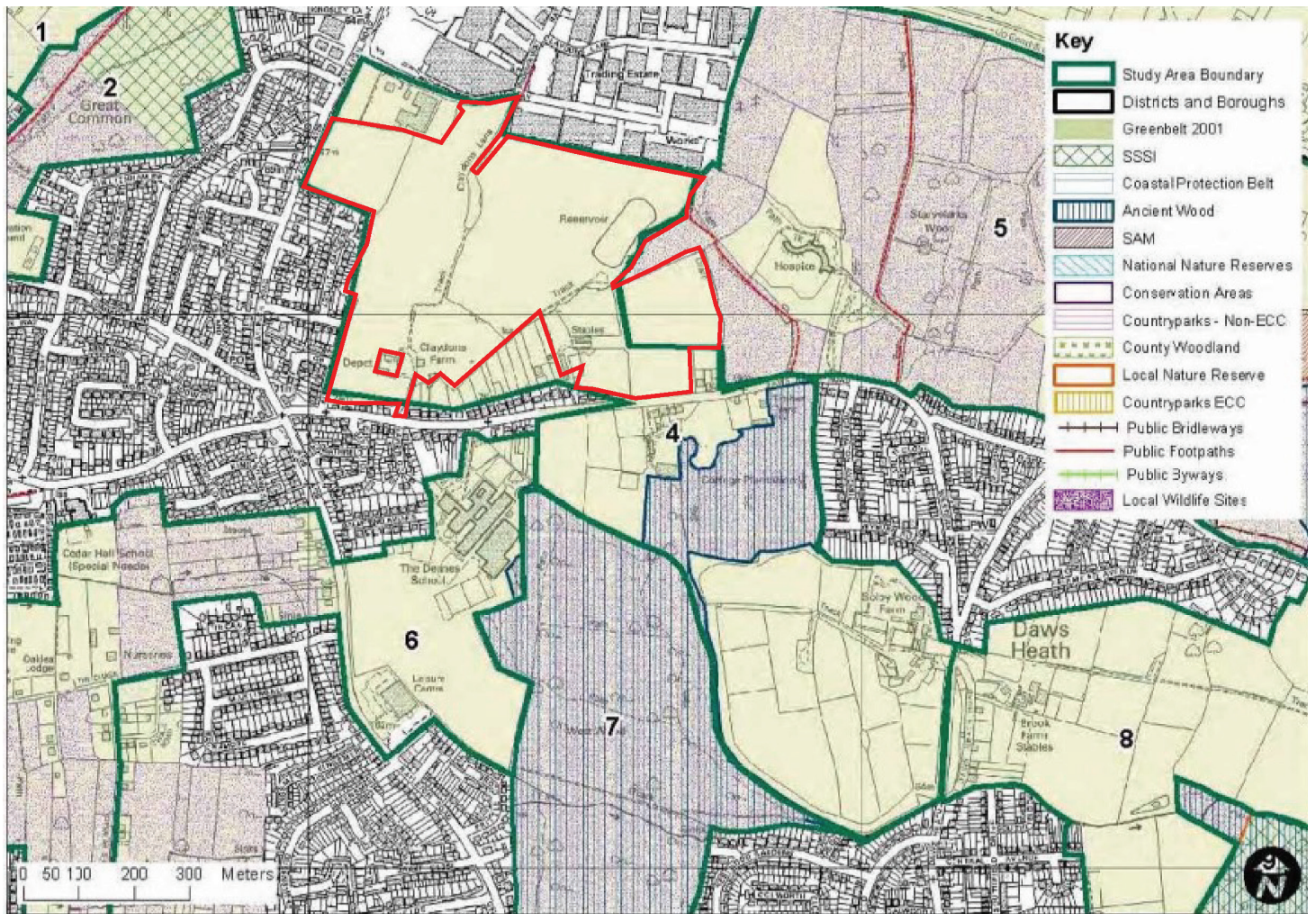


Fig.1.4 Plan showing the Green Belt Landscape Assessment 2010, abstract relating to Appeal Site and environs





Lenten House  
16 Lenten Street  
Alton  
Hampshire  
GU34 1HG

First Floor Studio  
The Old School  
4 Exton Street  
London  
SE18UE

[fabrikuk.com](http://fabrikuk.com)