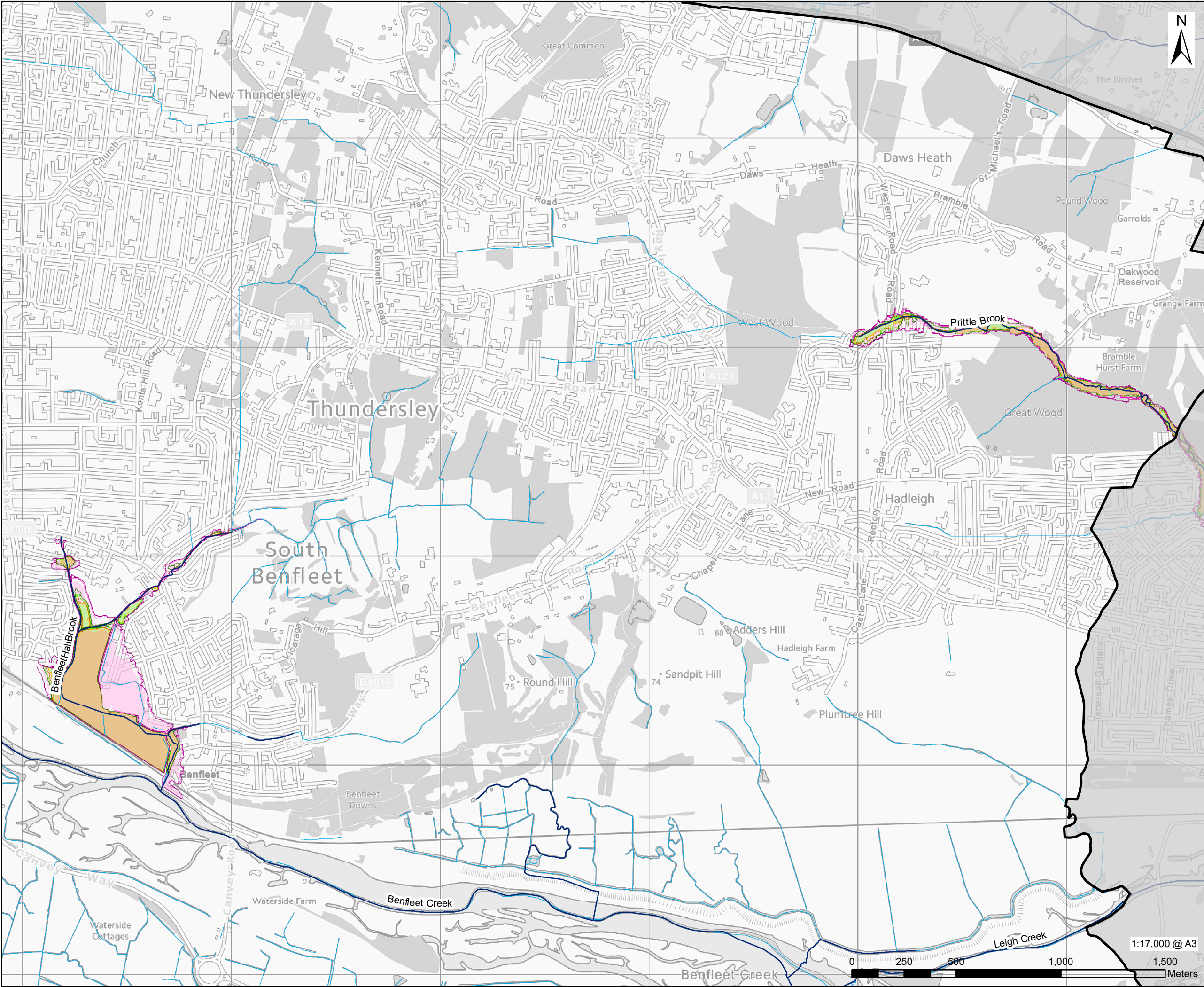


Appendix B Fluvial Modelling Mapping

Map 1: Modelled Fluvial Flood Risk – Present Day & Climate Change - Overview

Map 2A: Modelled Fluvial Flood Risk – Present Day & Climate Change – Benfleet Hall Brook

Map 2B: Modelled Fluvial Flood Risk – Present Day & Climate Change – Prittle Brook



This drawing has been prepared for the use of AECOM's client. It may not be used, modified, reproduced or relied upon by third parties, except as agreed by AECOM or as required by law. AECOM accepts no responsibility, and denies any liability whatsoever, to any party that uses or relies on this drawing without AECOM's express written consent. All measurements must be obtained from the stated dimensions.



PROJECT

Castle Point Borough Council
Level 1 Strategic Flood Risk
Assessment

CLIENT

Castle Point Borough Council

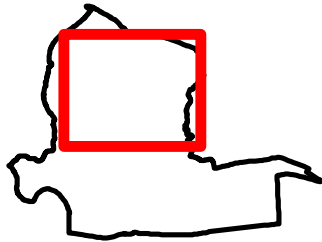
CONSULTANT

AECOM Limited
Midpoint, Alencon Link,
Basingstoke, Hampshire
RG21 7PP
www.aecom.com

LEGEND

- Castle Point Borough Council
- EA Main River
- Watercourse
- 3.3%
- 3.3% AEP plus 25% climate
- 3.3% AEP plus 38% climate
- 1%
- 1% AEP plus 25% climate
- 1% AEP plus 38% climate
- 0.1%
- 0.1% AEP plus 25% climate
- 0.1% AEP plus 38% climate

EXTENT INDICATOR



NOTES

- 1: This map shows the predicted likelihood of fluvial flooding based on modelling undertaken by AECOM. Refer to the SFRA report for details on the fluvial modelling methodology, assumptions and limitations.
- 2: All extents shown on this map are undefended.
- 3: This map is intended to provide a strategic overview of fluvial flood risk and should not be used to assess the flood risk for individual properties.

© Environment Agency copyright and/or database right.
Contains OS data © Crown copyright and database right (2023)

ISSUE PURPOSE

SFRA

PROJECT NUMBER

60725540

MAP TITLE

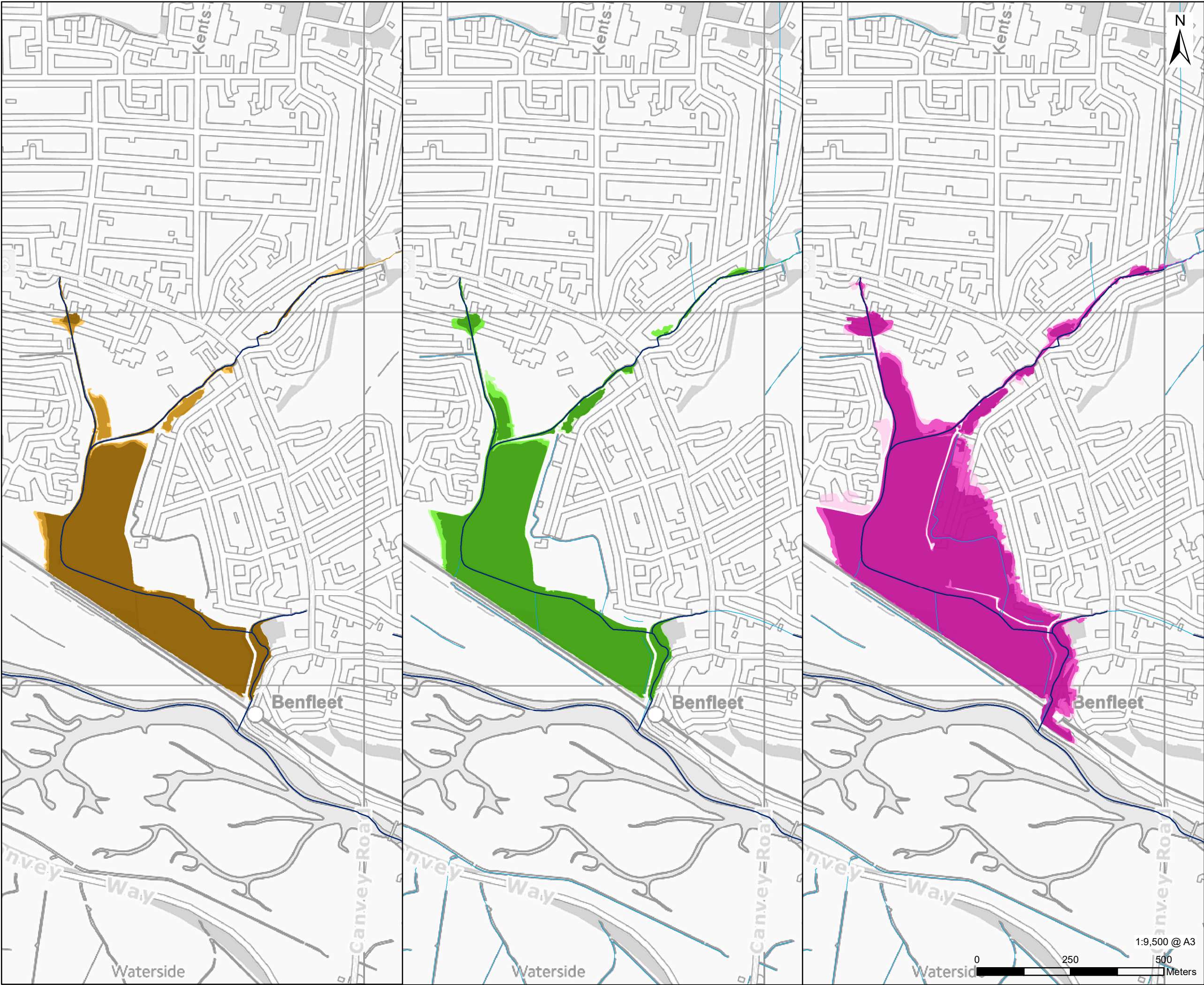
Modelled Fluvial Flood Risk - Present
Day & Climate Change - Overview

MAP NUMBER

Appendix B Map 1

1:17,000 @ A3

0 250 500 1,000 1,500
Meters



This drawing has been prepared for the use of AECOM's client. It may not be used, modified, reproduced or relied upon by third parties, except as agreed by AECOM or as required by law. AECOM accepts no responsibility, and denies any liability whatsoever, to any party that uses or relies on this drawing without AECOM's express written consent. Do not scale this document. All measurements must be obtained from the stated dimensions.

AECOM

PROJECT

Castle Point Borough Council
Level 1 Strategic Flood Risk
Assessment

CLIENT

Castle Point Borough Council

CONSULTANT

AECOM Limited
Midpoint, Alencon Link,
Basingstoke, Hampshire
RG21 7PP
www.aecom.com

LEGEND

- Castle Point Borough Council
- EA Main River
- 3.3% AEP
- 3.3% AEP plus 25% climate change
- 3.3% AEP plus 38% climate change
- 1% AEP
- 1% AEP plus 25% climate change
- 1% AEP plus 38% climate change
- 0.1% AEP
- 0.1% AEP plus 25% climate change
- 0.1% AEP plus 38% climate change

NOTES

- 1: This map shows the predicted likelihood of fluvial flooding based on modelling undertaken by AECOM. Refer to the SFRA report for details on the fluvial modelling methodology, assumptions and limitations.
- 2: All extents shown on this map are undefended.
- 3: This map is intended to provide a strategic overview of fluvial flood risk and should not be used to assess the flood risk for individual properties.

© Environment Agency copyright and/or database right.
Contains OS data © Crown copyright and database right (2023)

ISSUE PURPOSE

SFRA

PROJECT NUMBER

60725540

MAP TITLE

Modelled Fluvial Flood Risk - Present
Day & Climate Change - Benfleet Hall
Brook

MAP NUMBER

Appendix B Map 2A



AECOM

PROJECT
Castle Point Borough Council
Level 1 Strategic Flood Risk Assessment

CLIENT
Castle Point Borough Council

CONSULTANT
AECOM Limited
Midpoint, Alencon Link,
Basingstoke, Hampshire
RG21 7PP
www.aecom.com

LEGEND

| | |
|--|-------------------------------|
| | Castle Point Borough Council |
| | EA Main River |
| | Watercourse |
| | 3.3% AEP |
| | 3.3% AEP + 25% climate change |
| | 3.3% AEP + 38% climate change |
| | 1% AEP |
| | 1% AEP + 25% climate change |
| | 1% AEP + 38% climate change |
| | 0.1% AEP |
| | 0.1% AEP + 25% climate change |
| | 0.1% AEP + 38% climate change |

NOTES

1: This map shows the predicted likelihood of fluvial flooding based on modelling undertaken by AECOM. Refer to the SFRA report for details on the fluvial modelling methodology, assumptions and limitations.

2: All extents shown on this map are undefended.

3: This map is intended to provide a strategic overview of fluvial flood risk and should not be used to assess the flood risk for individual properties.

© Environment Agency copyright and/or database right.
Contains OS data © Crown copyright and database right (2023)

ISSUE PURPOSE

SFRA

PROJECT NUMBER
60725540

MAP TITLE
Modelled Fluvial Flood Risk - Present Day & Climate Change - Prittle Brook

MAP NUMBER
Appendix B Map 2B

This drawing has been prepared for the use of AECOM's client. It may not be used, modified, reproduced or relied upon by third parties, except as agreed by AECOM or as required by law. AECOM accepts no responsibility, and denies any liability whatsoever, to any party that uses or relies on this drawing without AECOM's express written consent. Do not scale this document. All measurements must be obtained from the stated dimensions.